

colour & design[®] MAGLIANO[™]



CD2-MAG-01 Fontana CD2-MAG-02 Nebbia CD2-MAG-03 Ciottolo CD2-MAG-04 Pietra CD2-MAG-05 Grigio



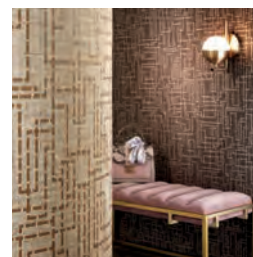
CD2-MAG-06 Delfino CD2-MAG-07 Verde Oliva CD2-MAG-08 Belle Notte CD2-MAG-09 Saturina CD2-MAG-10 Bianco



CD2-MAG-11 Bronzo CD2-MAG-12 Gemma CD2-MAG-13 Palazzo CD2-MAG-14 Villa Toscana CD2-MAG-15 San Bruzio



CD2-MAG-16 Cinta Muraria CD2-MAG-17 Castrano CD2-MAG-18Morrone Chiaro CD2-MAG-19 Fortezza CD2-MAG-20 Nero



FOR SIMILAR TEXTURES
CLICK HERE

Type II 24 oz | Width: 52"/54" | Backing: Osnaburg | Match: Non-Reversible Match Pattern
26-1/2"H x 34-1/2"V | Fire Rating: Class A | Flame Spread: 20 | Smoke Development: 10

[CLICK COLOURS](#)

[CLICK SAMPLES](#)

[CLICK SPECS](#)

[CONTACT US](#)



Copyright 2018. Colour & Design, Inc.
Any copying or other use is expressly prohibited.
Made in the U.S.A.