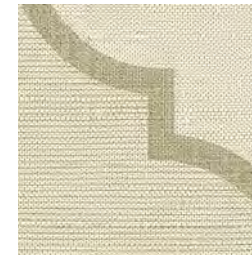


colour & design® **OBANA OGEE™**



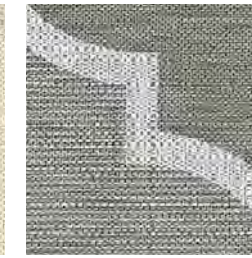
CD2-OGE-60 Wicker



CD2-OGE-11 Pale Taupe



CD2-OGE-12 Sandstone



CD2-OGE-17 Slate



CD2-OGE-36 Cream



CD2-OGE-37 Aura



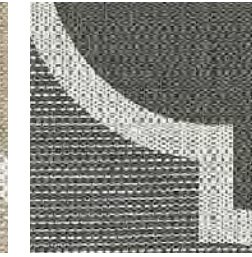
CD2-OGE-38 Mercury Glass



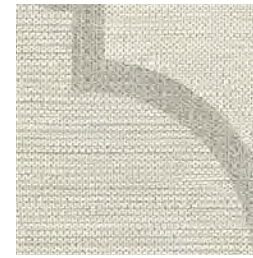
CD2-OGE-39 Silver Stone



CD2-OGE-40 Pewter



CD2-OGE-45 Black Mica



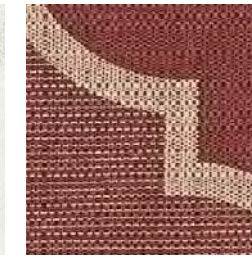
CD2-OGE-50 Natural Instincts



CD2-OGE-51 New Trail



CD2-OGE-52 White Hot



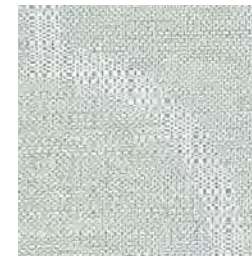
CD2-OGE-53 Pinot Noir



CD2-OGE-54 Paragon



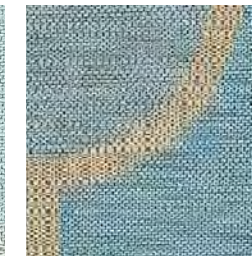
CD2-OGE-55 Mistique



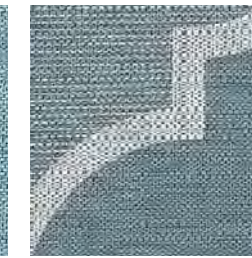
CD2-OGE-56 Gradient Tint



CD2-OGE-57 Halcyon



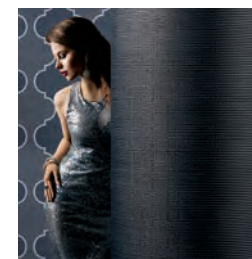
CD2-OGE-58 Seas the Day



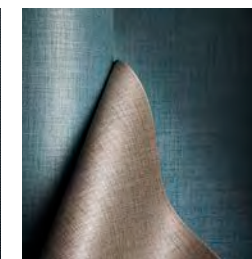
CD2-OGE-59 Sharkskin



FOR OBANA COORDINATE CLICK HERE



FOR OBANA GLINT COORDINATE CLICK HERE



FOR SIMILAR TEXTURES CLICK HERE

Type II 20 oz | Width: 52"/54" | Backing: Osnaburg | Match: Reversible Straight Across Match
Repeat 27"H x 24"V | Fire Rating: Class A | Flame Spread: 20 | Smoke Development: 45

[CLICK COLOURS](#)

[CLICK SAMPLES](#)

[CLICK SPECS](#)

[CONTACT US](#)



Copyright 2018. Colour & Design, Inc.
Any copying or other use is expressly prohibited.
Made in the U.S.A.